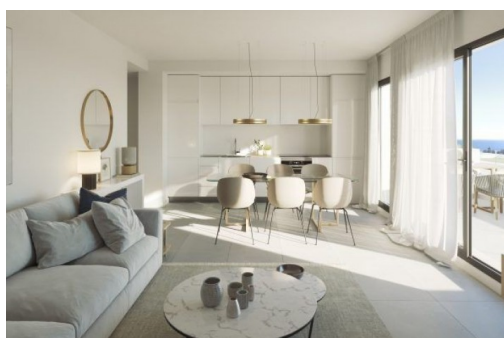


Exclusive & Elegant Townhouses with Spectacular Sea Views

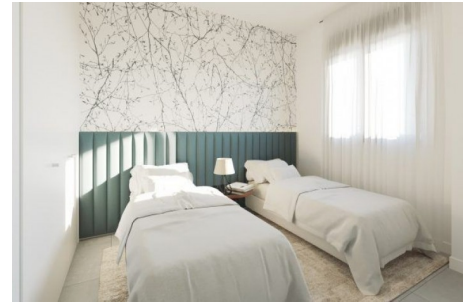
Manilva > Manilva

Under construction • Townhouses



KEY DETAILS

ARCHITECT:	Roman et Canibel Arquitectos	TYPE:	Townhouses
LOCATION:	Manilva	UNITS:	46
AREA:	Manilva	BEDS:	2, 3, 4
STATUS:	Under construction	PRICES:	€434,000–€425,000



FULL DESCRIPTION

An exclusive and elegant development of 46 single-family 2, 3 and 4 bedroom townhomes. Contemporary in style, located in a privileged enclave, integrated into nature and with spectacular views of the sea, the Strait of Gibraltar and Africa.

The homes have large terraces, gardens to enjoy with the family and bright living rooms with all the comfort you need.

The homes have high quality materials, spacious spaces and common areas to enjoy all year round: Clubhouse, infinity pool surrounded by gardens, gym and spa, where you can enjoy an "eternal vacation" improving the quality of life of its residents. In addition, the houses have their own garage and storage room. Now you can achieve your dream of living by the sea, a few meters from the beach, enjoy a bathing area with crystal clear waters and admire the beautiful views from this natural balcony of the Mediterranean.

Five minutes from the Sotogrande urbanization, surrounded by golf courses and marinas in which to carry out all kinds of leisure activities.

With the benefits of having the Gibraltar airport just 15 minutes away by car, and the proximity to urban centers such as Estepona, Puerto Banús and Marbella. Ideal for families who want to live or invest in exclusive homes within a strategic and natural enclave and make the most of the climate that the Costa del Sol offers us with open skies and a pleasant temperature where you can sunbathe, read or dine outdoors in your terrace whenever you want.

It is your life, choose where to live it, in a privileged and quiet environment next to the Mediterranean Sea!"

[Read more online...](#)